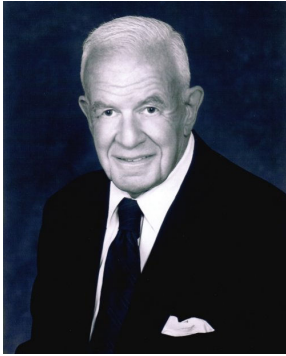


## Recommendation



Thomas S. Foley

---

Former US Ambassador in Japan  
Former Speaker of the House

I have known Shigekatsu Yamauchi since I arrived in Tokyo as the U.S. Ambassador in 1997. My wife Heather and I have enjoyed a continuing association with Shige and his family since that time. We have been grateful to them for giving us the rare opportunity to share their knowledge of Japanese daily life experience.

Shigekatsu Yamauchi is an extraordinary person. After working for a major global company Shige studied language pedagogy at Cornell University. When he returned to Japan he and his family founded the International Communication Institute (ICI) to promote better understanding between Japan and the world.

ICI has been investing time, talent and money in the creation of an efficient and enjoyable system for foreign learners of Japanese. In cooperation with a US company ICI has developed what it believes is a revolutionary approach for the teaching of Japanese, called Step Up Nihongo.

In so many ways America and Japan share similar objectives and values but in other ways they can be strikingly different. ICI believes that learning a language can contribute to a broader understanding of a nation and its culture. Giving the study of Japanese this wider purpose and character while making it both intriguing and entertaining, is what Step Up Nihongo seeks to do.

I earnestly hope that Step Up Nihongo will help many from all over the world to better understand and enjoy Japan, its language and its people. We wish them every success.

With warmest best wishes.

A handwritten signature in black ink, appearing to read "Thomas S. Foley". The signature is fluid and cursive, with the first name "Thomas" and last name "Foley" clearly legible.

Thomas S. Foley